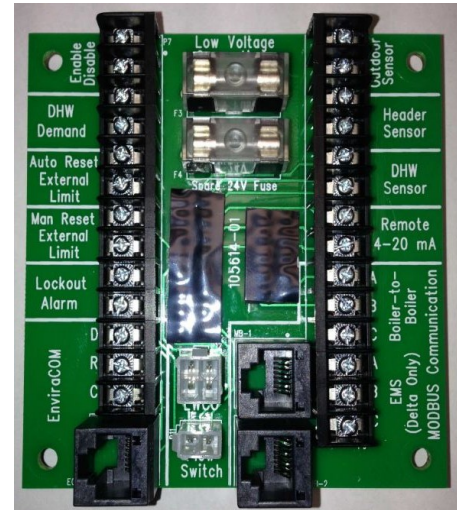


Peer to Peer on Apex C & AMPL boilers

To enable boiler to boiler, the master must have a header sensor

New PCB's on Apex C Boilers for ease of connections



For Boiler to Boiler use either RJ45 Ethernet cable in one of the plugs on the PCB and plug the other end into the next boiler. Or, you have a choice to hardwire ABC of the boiler to boiler lugs. If you are using a BMS you must also hardwire ABC on the EMS lugs as well, daisy chaining to the other boilers.

On the Display Tap Adjust (gear at the top)

Tap Sequencer Master

Tap the lock at the top and Type in 86 enter to unlock the display. The lock should turn green.

Enable the master. (this must be the boiler with the header sensor on it)

Tap the return arrow top right

Tap sequence slave and name the master boiler 1

Tap return arrow

Tap pumps

Program in your boiler pump to header sensor demand (on all the boilers)

Tap return arrow

Tap System

Change outdoor sensor source to wireless unless you intend on using our outdoor sensor for outdoor reset.

Tap return arrow

Tap central heat and put in the setpoint you want the boiler water to be where you mounted the header sensor.

Understand, when using boiler to boiler, the slave boilers do not show the setpoint. The master enables the boilers as needed and modulates the burners. This works just like a panel.

To set up outdoor reset with our 10k ohm outdoor sensor supplied with the Apex boilers: (AMP are purchased seperately)

wire outdoor sensor to the master only. Make sure sensor is in the shade outside.

The central heat setpoint will be the water temp setpoint at the coldest temp outside.

Tap outdoor reset

Set up your reset curves for the boiler water when it's warm outside as well as the outdoor temps.

You can check your setup by tapping GRAPH

Tap return arrow

Now go to boiler 2

Tap adjust

Tap sequence slave

tap the lock at the top and type 86 enter to unlock the display

under sequence slave name it address, 2

For the remaining slave boilers, use 3,4,5, etc. until they are all programmed

On the slave boilers tap System

Change the outdoor sensor source to not installed. (it comes defaulted to Wired and you will get an alarm.

Go back to the master and under the dial that says "HEADER" it should say

Sequencer Master boilers 1,2,3,4 etc.

Now you know they are communicating.