

Submittal Data

PROJECT:	UNIT TAG:	QUANTITY:
REPRESENTATIVE: _____	TYPE OF SERVICE:	DATE: _____
ENGINEER:	SUBMITTED BY:	DATE:
CONTRACTOR:	APPROVED BY:	DATE:
	ORDER NO.:	DATE:

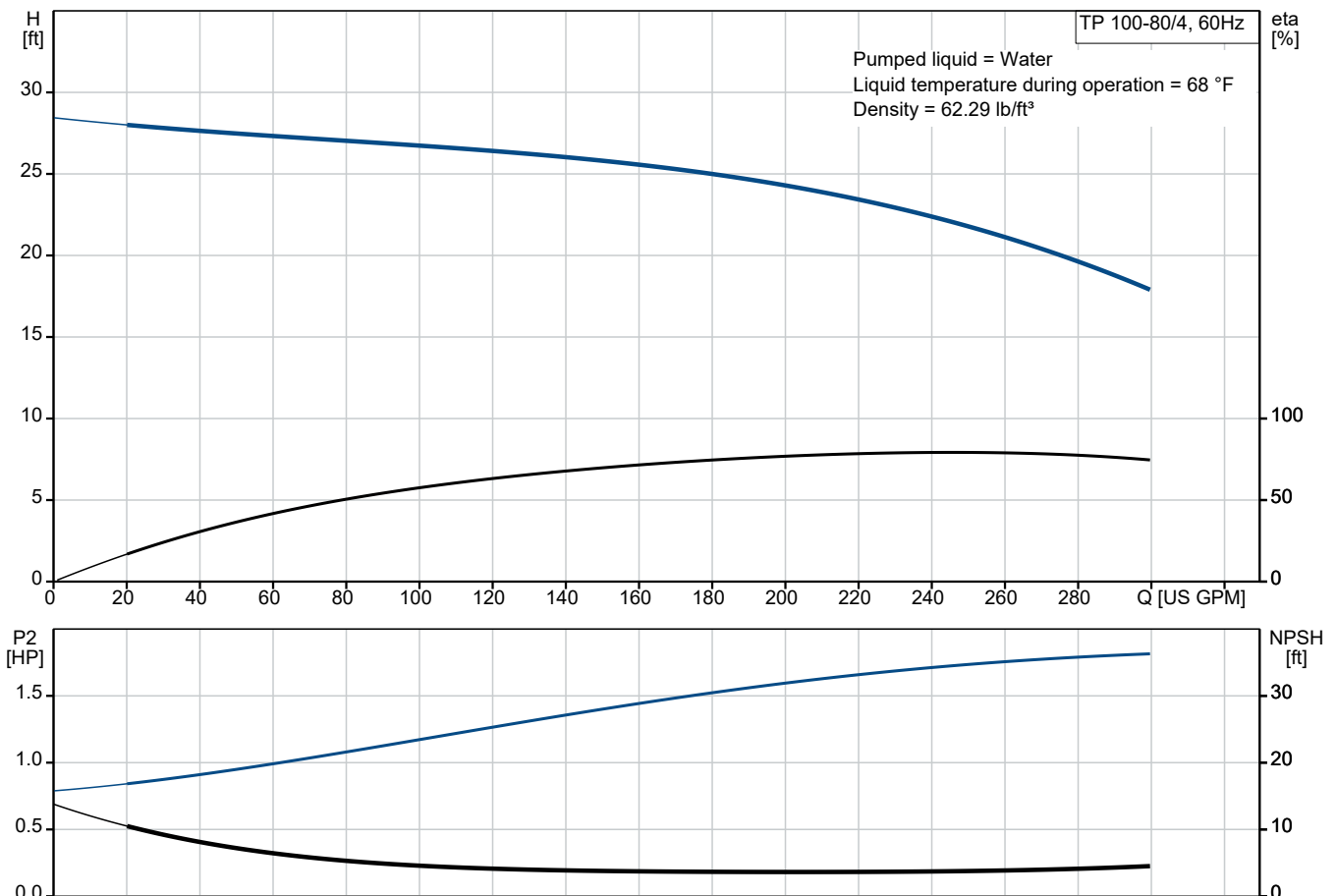


TP 100-80/4 A-G-A-BUBE-HX4

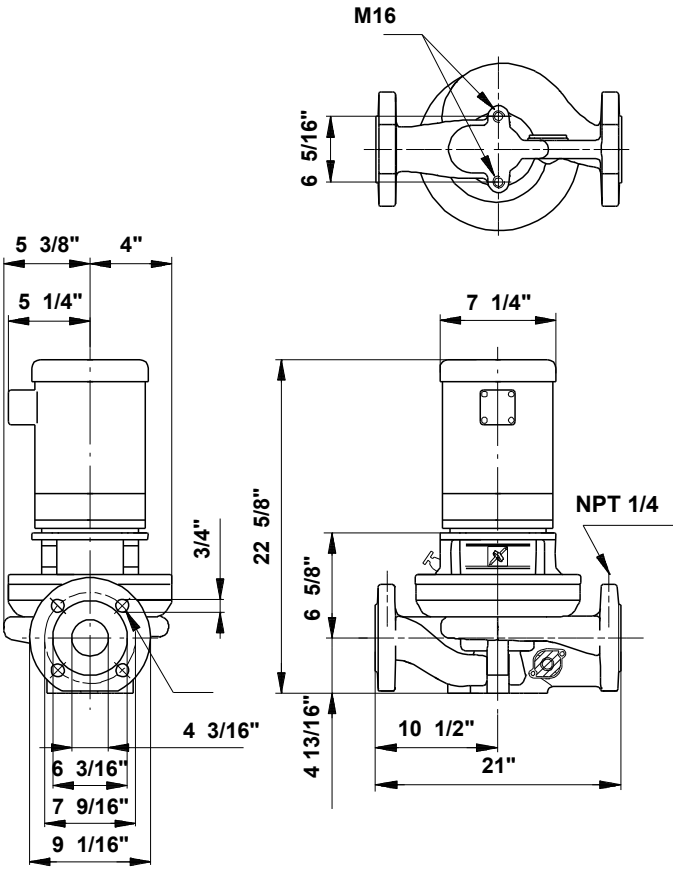
Grundfos TP pumps are single-stage, close-coupled in-line centrifugal pumps with mechanical shaft seal and primely for applications such as heating/cooling/district energy. The pumps are fitted with fixed speed motors.

Note! Product picture may differ from actual product

Conditions of Service		Pump Data		Motor Data	
Liquid:	Water	Maximum operating pressure:	145.04 psi	Rated power - P2:	2 HP
Temperature:	68 °F	Liquid temperature range:	5 .. 284 °F	Rated voltage:	208-230/460 V
Specific Gravity:	1.000	Maximum ambient temperature:	131 °F	Mains frequency:	60 Hz
		Approvals motor:	UL Recognized Component, CSA	Insulation class:	B
		Shaft seal:	BUBE	Motor protection:	None
		Flange standard:	ANSI	Motor type:	Baldor, TEFC
		Pipe connection:	4"		
		Product number:	96411847		



Submittal Data



- Materials:**
- Pump housing: Cast iron
 - Pump housing: EN-JL1040
 - Pump housing: ASTM 25 B
 - Impeller: Stainless steel
 - Impeller: DIN W.-Nr. 1.4301
 - Impeller: AISI 304