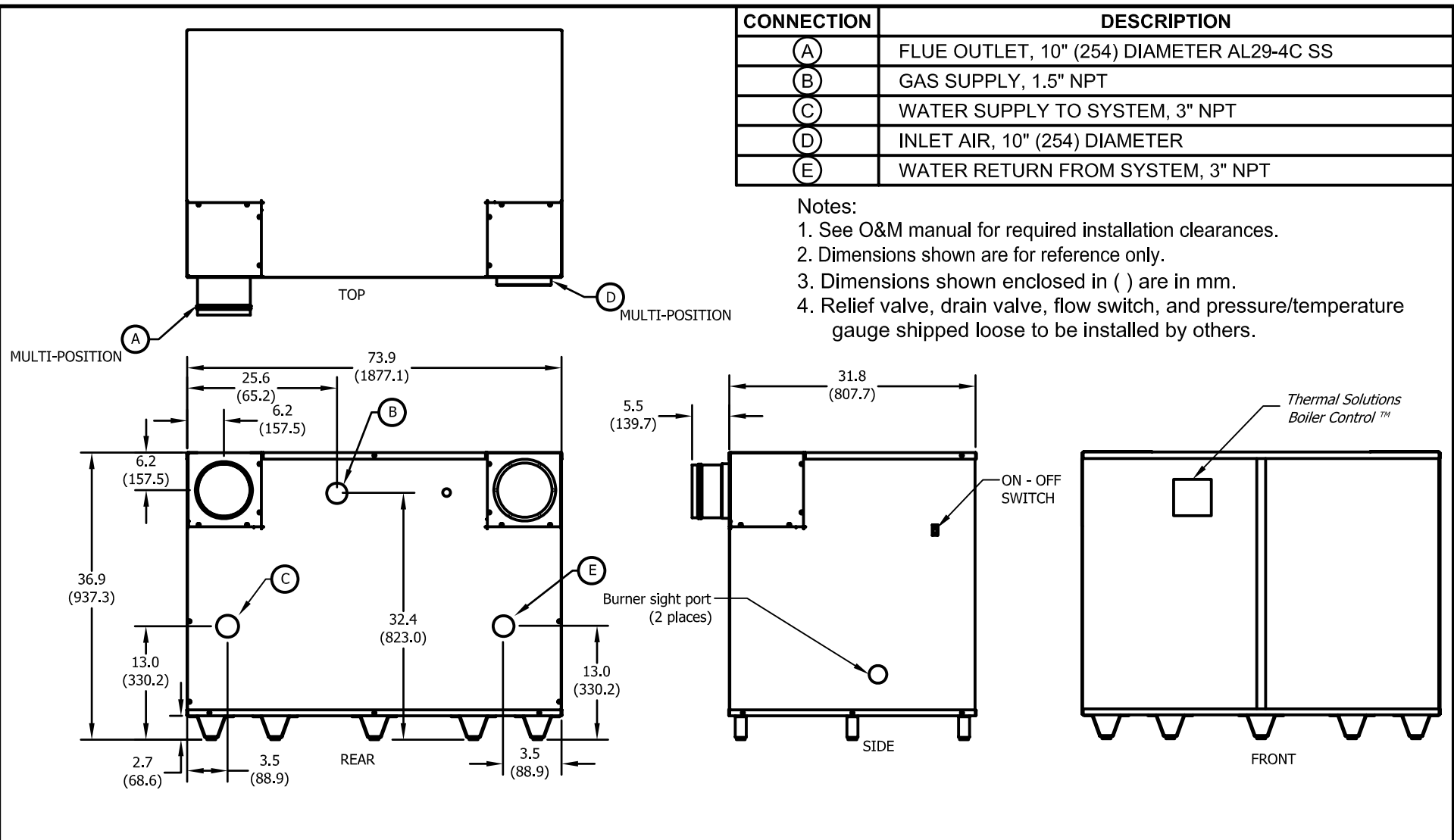


CONNECTION	DESCRIPTION
(A)	FLUE OUTLET, 10" (254) DIAMETER AL29-4C SS
(B)	GAS SUPPLY, 1.5" NPT
(C)	WATER SUPPLY TO SYSTEM, 3" NPT
(D)	INLET AIR, 10" (254) DIAMETER
(E)	WATER RETURN FROM SYSTEM, 3" NPT

Notes:

1. See O&M manual for required installation clearances.
2. Dimensions shown are for reference only.
3. Dimensions shown enclosed in ( ) are in mm.
4. Relief valve, drain valve, flow switch, and pressure/temperature gauge shipped loose to be installed by others.



RATINGS & CAPACITIES		ASME DESIGN DATA	
Fuel	Natural Gas or Propane	Max. 160 PSIG & 250°F	
Input - High Fire	1,500,000 Btu/Hr.	TRIM & CONTROLS	
Output - High Fire	1,262,000 Btu/Hr.	High Limit	Pilot Gas Valve
Boiler H.P.	37.7 H.P. (370.1 kW)	Flame Safeguard	Pilot Gas Regulator
Inlet Gas Pressure	14.0" W.C. Max.	High/Low Gas Press Switches (Opt.)	Pilot/Leak Test Cocks
	4.5" W.C. Min.	Modulating Gas Valve	Combustion Air Switch
Operating Weight	741 Lbs. (336 kg)	Thermal Solutions Boiler Control™ (24v)	Press. & Temp. Gauge
Electrical Supply	120V/1PH/60Hz, 16.6 Amp	Blower Motor, 1-1/8 HP	Relief Valve (Note 4)
		LWCO Flow Switch	

**SOL - 1500**

Property of

**THERMAL SOLUTIONS**

P.O. Box 3244, Lancaster, PA 17604-3244