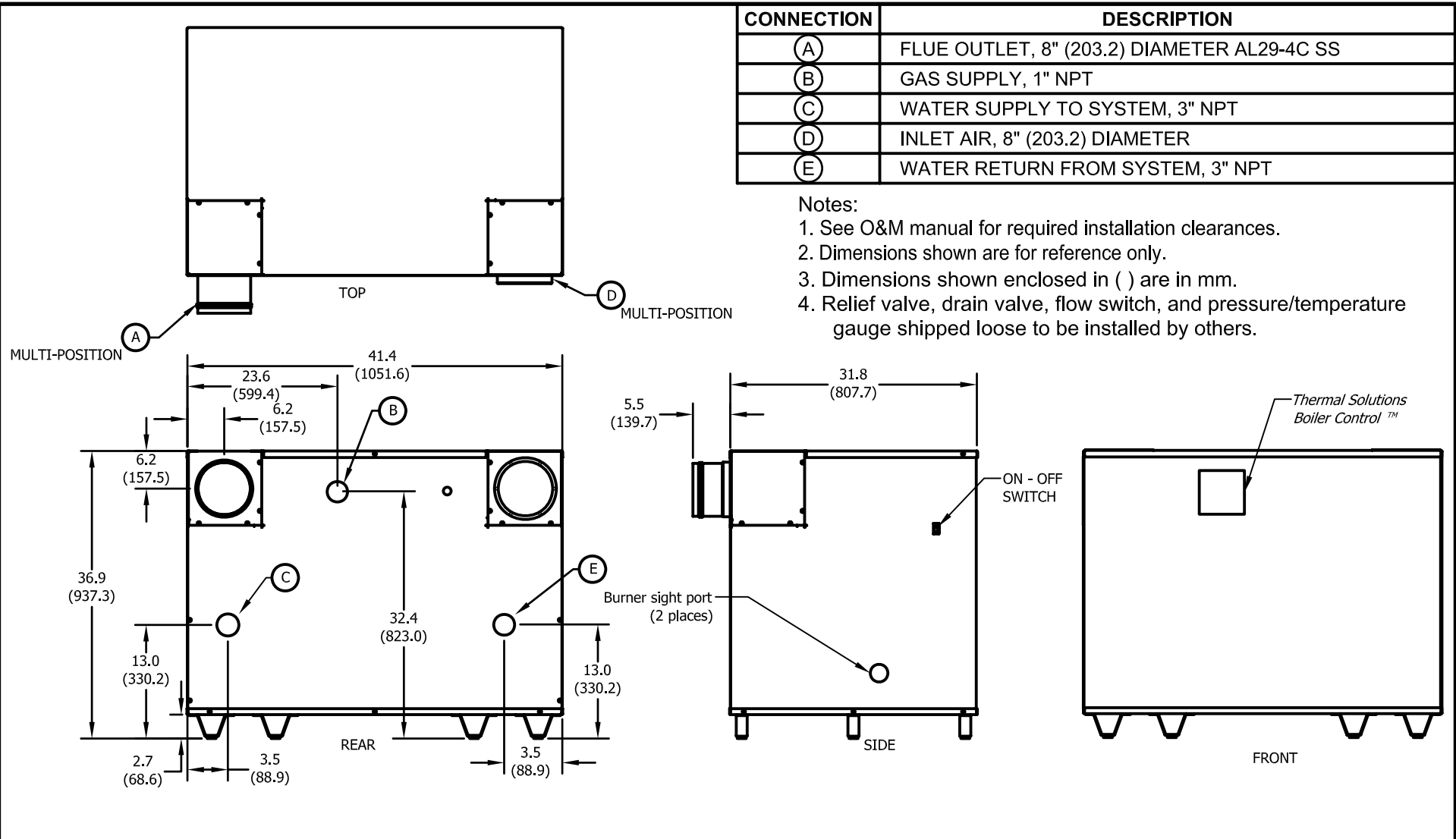


CONNECTION	DESCRIPTION
(A)	FLUE OUTLET, 8" (203.2) DIAMETER AL29-4C SS
(B)	GAS SUPPLY, 1" NPT
(C)	WATER SUPPLY TO SYSTEM, 3" NPT
(D)	INLET AIR, 8" (203.2) DIAMETER
(E)	WATER RETURN FROM SYSTEM, 3" NPT

Notes:

1. See O&M manual for required installation clearances.
2. Dimensions shown are for reference only.
3. Dimensions shown enclosed in () are in mm.
4. Relief valve, drain valve, flow switch, and pressure/temperature gauge shipped loose to be installed by others.



ASME DESIGN DATA

Max. 160 PSIG & 250°F

TRIM & CONTROLS

- | | |
|---|-----------------------|
| High Limit | Pilot Gas Valve |
| Flame Safeguard | Pilot Gas Regulator |
| High/Low Gas Press Switches (Opt.) | Pilot/Leak Test Cocks |
| Modulating Gas Valve | Combustion Air Switch |
| Thermal Solutions Boiler Control™ (24v) | Press. & Temp. Gauge |
| Blower Motor, 3/4 HP | Relief Valve (Note 4) |
| LWCO Flow Switch | |

RATINGS & CAPACITIES

Fuel	Natural Gas or Propane
Input - High Fire	750,000 Btu/Hr.
Output - High Fire	626,000 Btu/Hr.
Boiler H.P.	18.7 H.P. (183.6 kW)
Inlet Gas Pressure	14.0" W.C. Max. 4.5" W.C. Min.
Operating Weight	529 Lbs. (240 kg)
Electrical Supply	120V/1PH/60Hz, 11.6 Amp

SOL - 750

Property of
 **THERMAL SOLUTIONS**
 P.O. Box 3244, Lancaster, PA 17604-3244