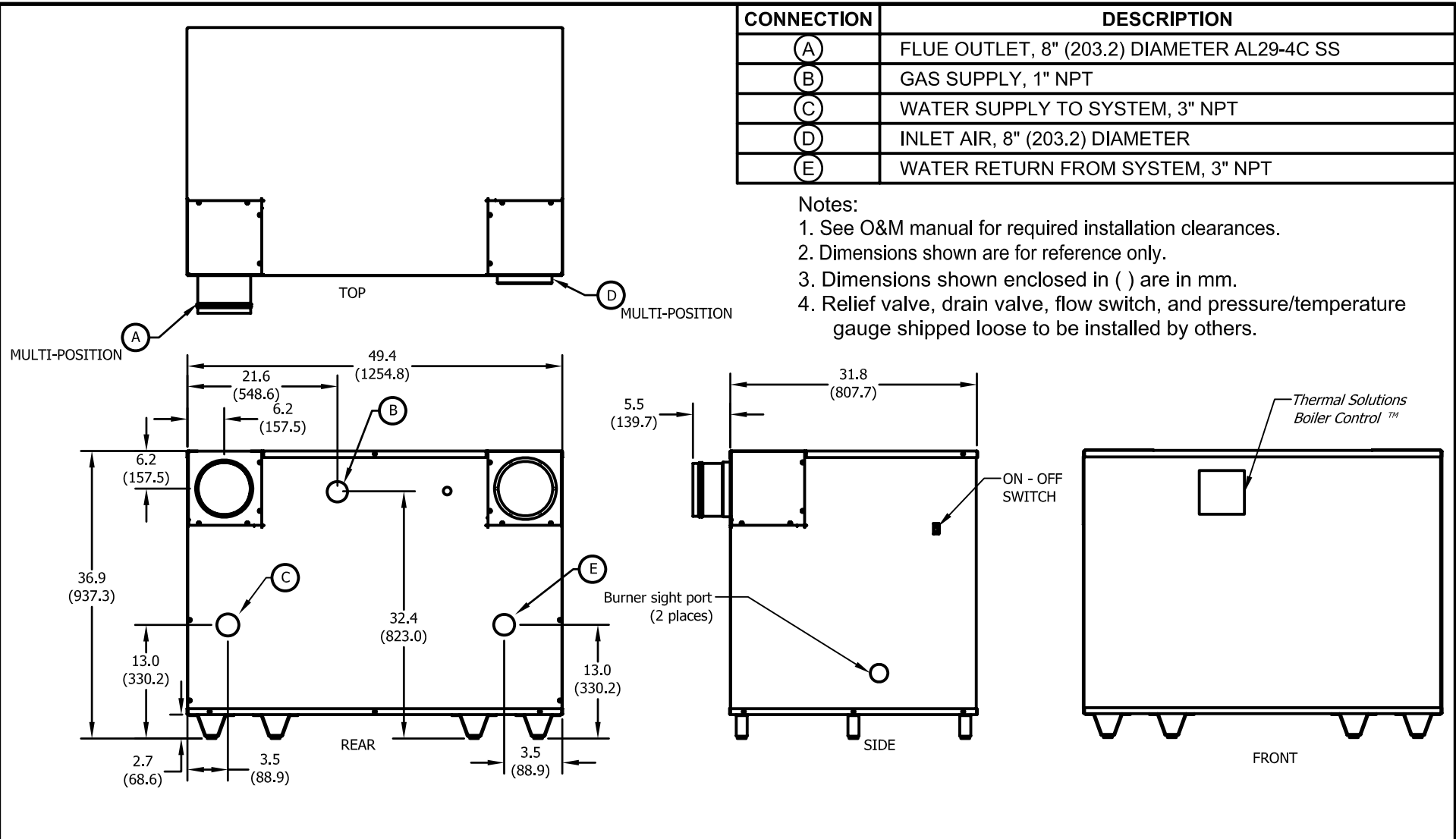


CONNECTION	DESCRIPTION
(A)	FLUE OUTLET, 8" (203.2) DIAMETER AL29-4C SS
(B)	GAS SUPPLY, 1" NPT
(C)	WATER SUPPLY TO SYSTEM, 3" NPT
(D)	INLET AIR, 8" (203.2) DIAMETER
(E)	WATER RETURN FROM SYSTEM, 3" NPT

Notes:

1. See O&M manual for required installation clearances.
2. Dimensions shown are for reference only.
3. Dimensions shown enclosed in ( ) are in mm.
4. Relief valve, drain valve, flow switch, and pressure/temperature gauge shipped loose to be installed by others.



**ASME DESIGN DATA**

Max. 160 PSIG & 250°F

**TRIM & CONTROLS**

High Limit	Pilot Gas Valve
Flame Safeguard	Pilot Gas Regulator
High/Low Gas Press Switches (Opt.)	Pilot/Leak Test Cocks
Modulating Gas Valve	Combustion Air Switch
Thermal Solutions Boiler Control™ (24v)	Press. & Temp. Gauge
Blower Motor, 3/4 HP	Relief Valve (Note 4)
LWCO Flow Switch	

**RATINGS & CAPACITIES**

Fuel	Natural Gas or Propane
Input - High Fire	1,000,000 Btu/Hr.
Output - High Fire	821,000 Btu/Hr.
Boiler H.P.	24.5 H.P. (240.8 kW)
Inlet Gas Pressure	14.0" W.C. Max. 4.5" W.C. Min.
Operating Weight	570 Lbs. (259 kg)
Electrical Supply	120V/1PH/60Hz, 11.6 Amp

**SOL - 1000**

Property of



P.O. Box 3244, Lancaster, PA 17604-3244