

RATINGS & CAPACITIES	
Fuel	Natural Gas or Propane
Input - High Fire	3,000,000 Btu/Hr.
Output - High Fire	2,910,000 Btu/Hr.
Boiler	86.9 H.P. [852.8 KW/Hr.]
Inlet Gas Pressure(NG)	5 PSI Max. 6" W.C. Min.
Inlet Gas Pressure(LP)	2 PSI Max. 6" W.C. Min.
Operating Weight	3804 Lbs. [1725.5 Kg]

ELECTRICAL SUPPLY OPTIONS	
	MOD:
120v/1ph/60hz:	N/A
208v/1ph/60hz:	N/A
230v/1ph/60hz:	N/A
208v/3ph/60hz:	14.6 Amps
230v/3ph/60hz:	13.9 Amps
460v/3ph/60hz:	7.0 Amps

ASME DESIGN DATA	
Max. 160 PSIG & 250°F	

TRIM & CONTROLS	
High Temperature Limit	Pilot Gas Valve
Flame Safeguard	Pilot Gas Regulator
High/Low Gas Press Switches	Pilot/Leak Test Cocks
Modulating Gas Valve	Combustion Air Switch
Operating Control	Press. & Temp. Gauge
Blower Motor, 2 HP	Relief Valve
LWCO Flow Switch	VFD
Pump (internal), 2 HP	LWCO
Thermal Solutions Boiler Control (TSBC)	

**DOUBLE BLOCK & BLEED(D.B.&B.) GAS TRAIN OPTION**

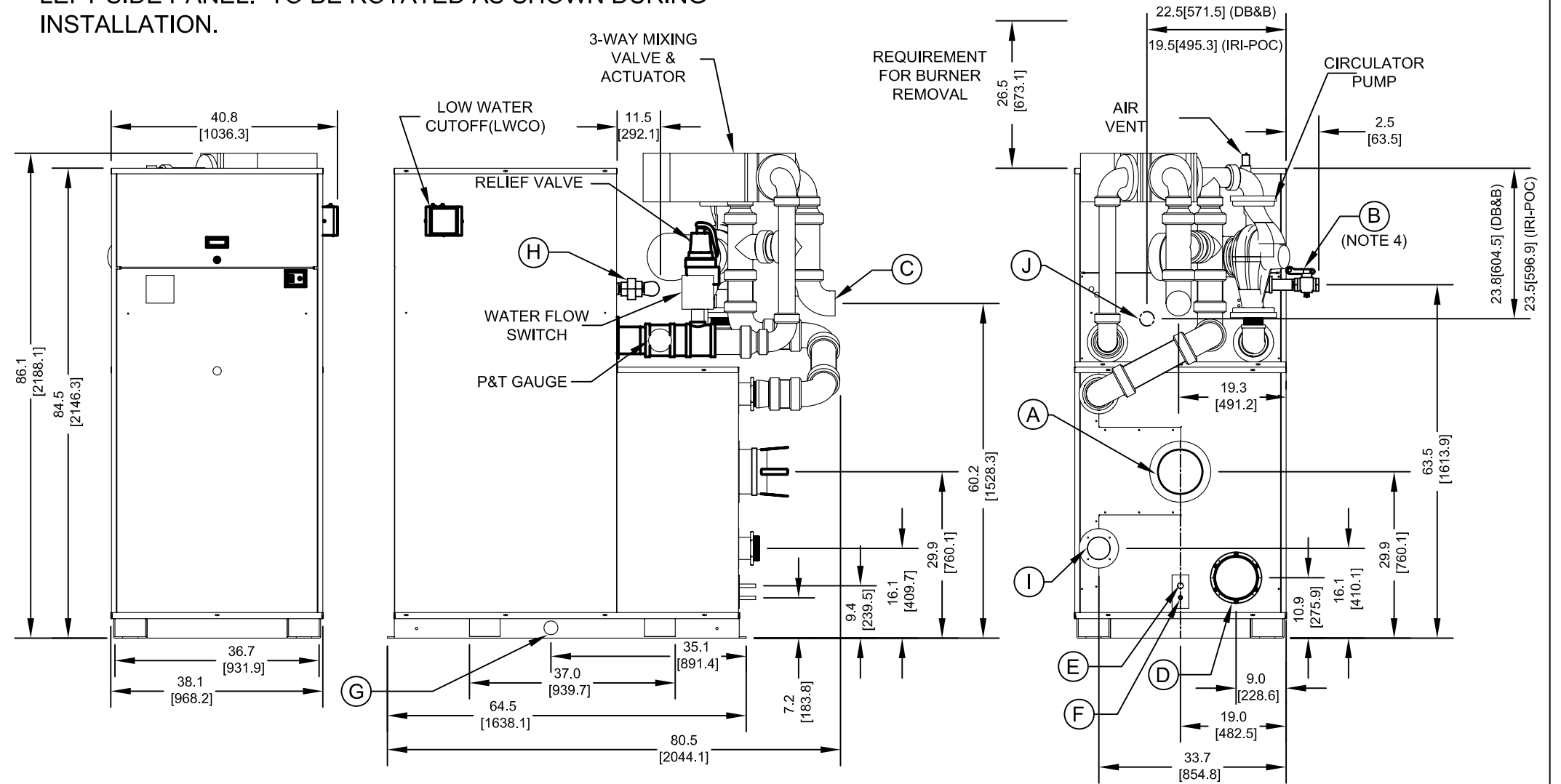
The following components are included in addition to above items when this option is used.  
 (2) Motorized Gas Valves  
 N.O. Vent Valve

**D.B.&B. W/ P.O.C. GAS TRAIN OPTION**

The following components are included in addition to above items when this option is used.  
 (2) Motorized Gas Valves With Proof Of Closure switches  
 Flame Safeguard that recognizes proof of closure valves.  
 N.O. Vent Valve

**NOTES:**

1. SEE O&M FOR REQUIRED INSTALLATION CLEARANCES.
2. DIMENSIONS SHOWN ARE FOR REFERENCE ONLY.
3. DIMENSIONS ENCLOSED IN ( ) ARE IN MM.
4. GAS PILOT IS SHIPPED FACING DOWNWARD, FLUSH WITH BOILER LEFT SIDE PANEL. TO BE ROTATED AS SHOWN DURING INSTALLATION.



CONNECTION	DESCRIPTION
(A)	FLUE OUTLET, 8" (203.2) DIAMETER (AL29-4C SS)
(B)	GAS PILOT, 1/4" (6.4) O.D. TUBE
(C)	WATER SUPPLY TO SYSTEM, 4" VICTAULIC
(D)	INLET AIR, 8" (203.2) DIAMETER
(E)	DRAIN, PRIMARY CONDENSATE, 5/8" (15.9) O.D. TUBE
(F)	DRAIN, SECONDARY CONDENSATE, 1/2" (12.7) O.D. TUBE
(G)	DRAIN, BOILER, 1" NPT
(H)	GAS SUPPLY, 2" NPT
(I)	WATER RETURN FROM SYSTEM, 4" NPT
(J)	GAS VENT, 1" NPT (DB&B AND DB&B W/ IRI-POC ONLY)

**EVCA - 3000**



P.O. Box 3244, Lancaster, PA 17604-3244

Innovative Equipment For Hot Water Systems  
[www.thermalsolutions.com](http://www.thermalsolutions.com)