

RATINGS & CAPACITIES	
Fuel	Natural Gas or Propane
Input - High Fire	1,500,000 Btu/Hr.
Output - High Fire	1,420,000 Btu/Hr.
Boiler	42.4 H.P. (416.2 kW/Hr.)
Inlet Gas Pressure (NG)	5 PSI Max. 7" W.C. Min.
Inlet Gas Pressure (LP)	2 PSI Max. 7" W.C. Min.
Operating Weight	1925 Lbs. (872 Kg)

ELECTRICAL SUPPLY OPTIONS	
	MOD:
120v/1ph/60hz:	19.3 Amps
208v/1ph/60hz:	11.9 Amps
230v/1ph/60hz:	11.8 Amps
208v/3ph/60hz:	9.3 Amps
230v/3ph/60hz:	9.0 Amps
460v/3ph/60hz:	7.2 Amps

ASME DESIGN DATA	
Max. 160 PSIG & 250°F	

BOILER TRIM & CONTROLS	
High Temperature Limit	VFD
Flame Safeguard	Pilot Gas Valve
High/Low Gas Press Switches	Pilot Gas Regulator
Modulating Gas Valve	Pilot/Leak Test Cocks
	3-Way Mixing Valve
Blower Motor, 1-1/2 HP	Combustion Air Switch
LWCO Flow Switch	Press. & Temp. Gauge
Pump (internal), 3/4 HP	Relief Valve
Thermal Solutions Boiler Control (TSBC)	

**DOUBLE BLOCK & BLEED(D.B.&B.) GAS TRAIN OPTION**

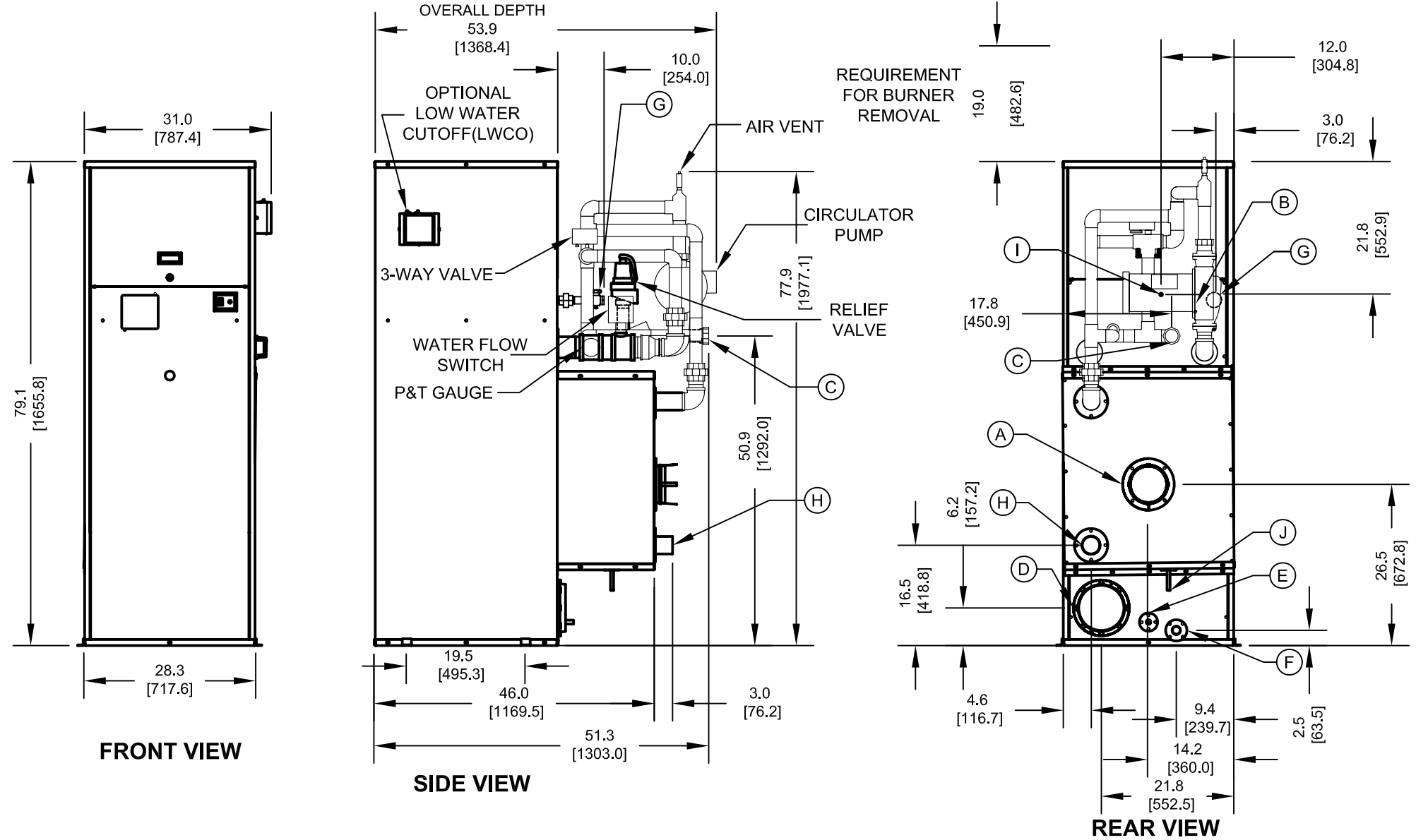
The following components are included in addition to above items when this option is used:  
 (2) Motorized Gas Valves  
 N.O. Vent Valve

**D.B.&B. W/ P.O.C. GAS TRAIN OPTION**

The following components are included in addition to above items when this option is used:  
 (2) Motorized Gas Valves With Proof Of Closure Switches  
 Flame Safeguard that recognizes proof of closure valves.  
 N.O. Vent Valve

**NOTES:**

- SEE O&M FOR REQUIRED INSTALLATION CLEARANCES.
- DIMENSIONS SHOWN ARE FOR REFERENCE ONLY.
- DIMENSIONS ENCLOSED IN ( ) ARE IN MM.



CONNECTION	DESCRIPTION
(A)	FLUE OUTLET, 6" (152.4) DIAMETER (AL29-4C SS)
(B)	GAS PILOT, 1/4" (6.4) O.D. TUBE
(C)	WATER SUPPLY TO SYSTEM, 2" NPT
(D)	INLET AIR, 8" (203.2) DIAMETER
(E)	DRAIN, CONDENSATE, 5/8" (15.9) O.D. TUBE, PRIMARY
(F)	DRAIN, BOILER, 1" NPT
(G)	GAS SUPPLY, 1 1/2" NPT
(H)	WATER RETURN FROM SYSTEM, 2 1/2" NPT
(I)	GAS VENT, 3/4" NPT (D.B.&B. & D.B.&B. w/ POC ONLY)
(J)	DRAIN, CONDENSATE, 1/2"(12.7) O.D. TUBE, SECONDARY

**EVCA - 1500**

Property of

**THERMAL SOLUTIONS**

P.O. Box 3244, Lancaster, PA 17604-3244

Innovative Equipment For Hot Water Systems  
[www.thermalsolutions.com](http://www.thermalsolutions.com)